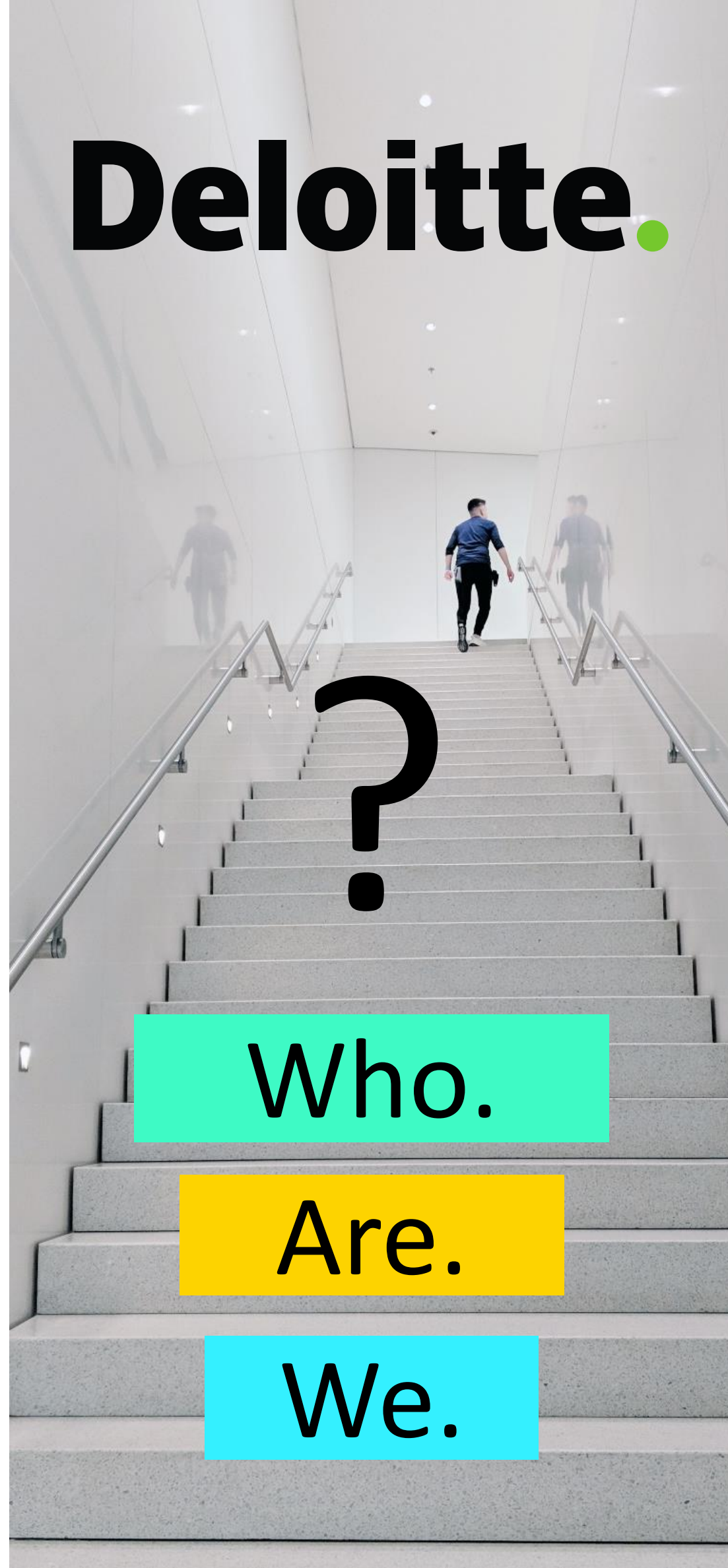




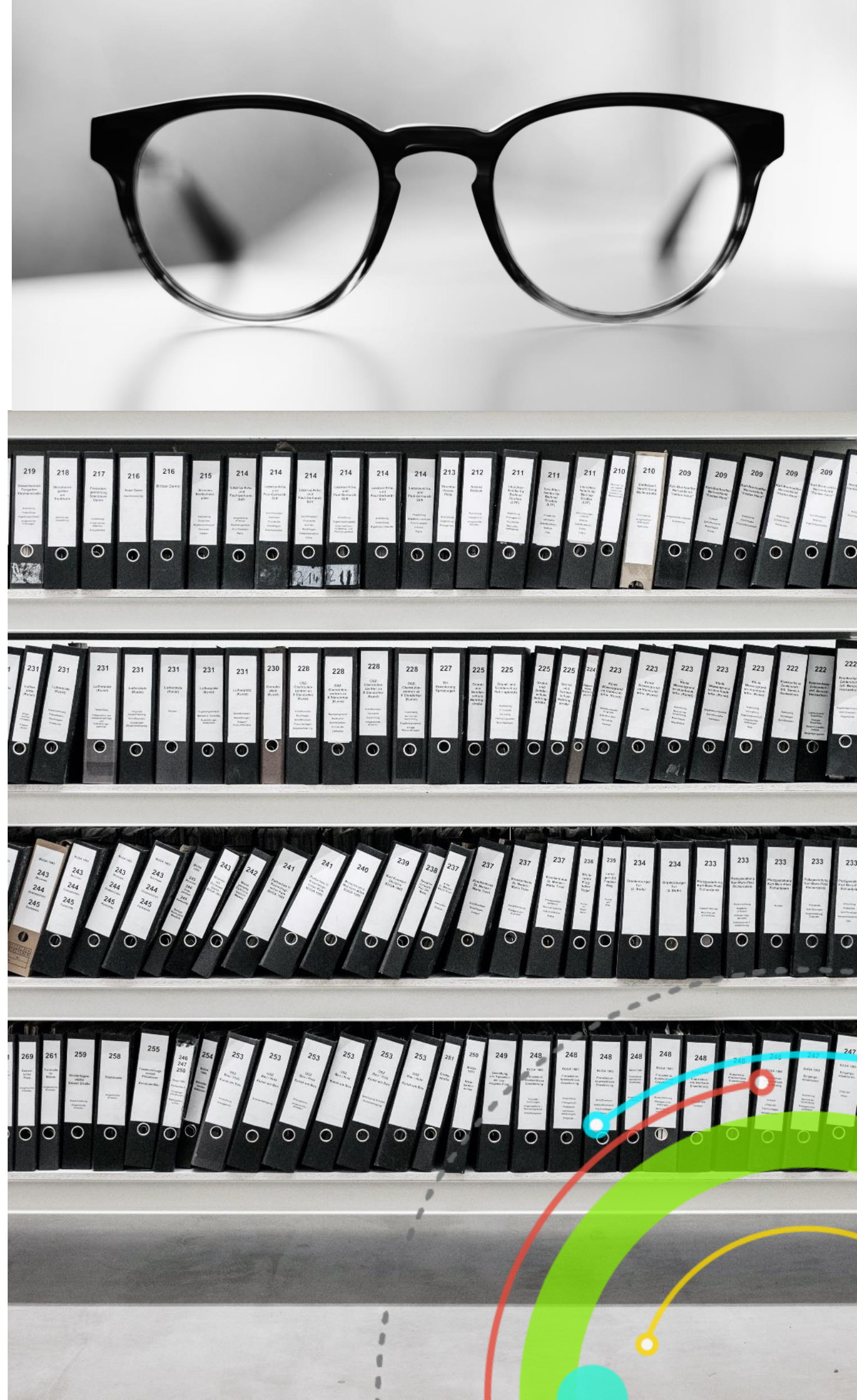
Deloitte.



Who.

Are.

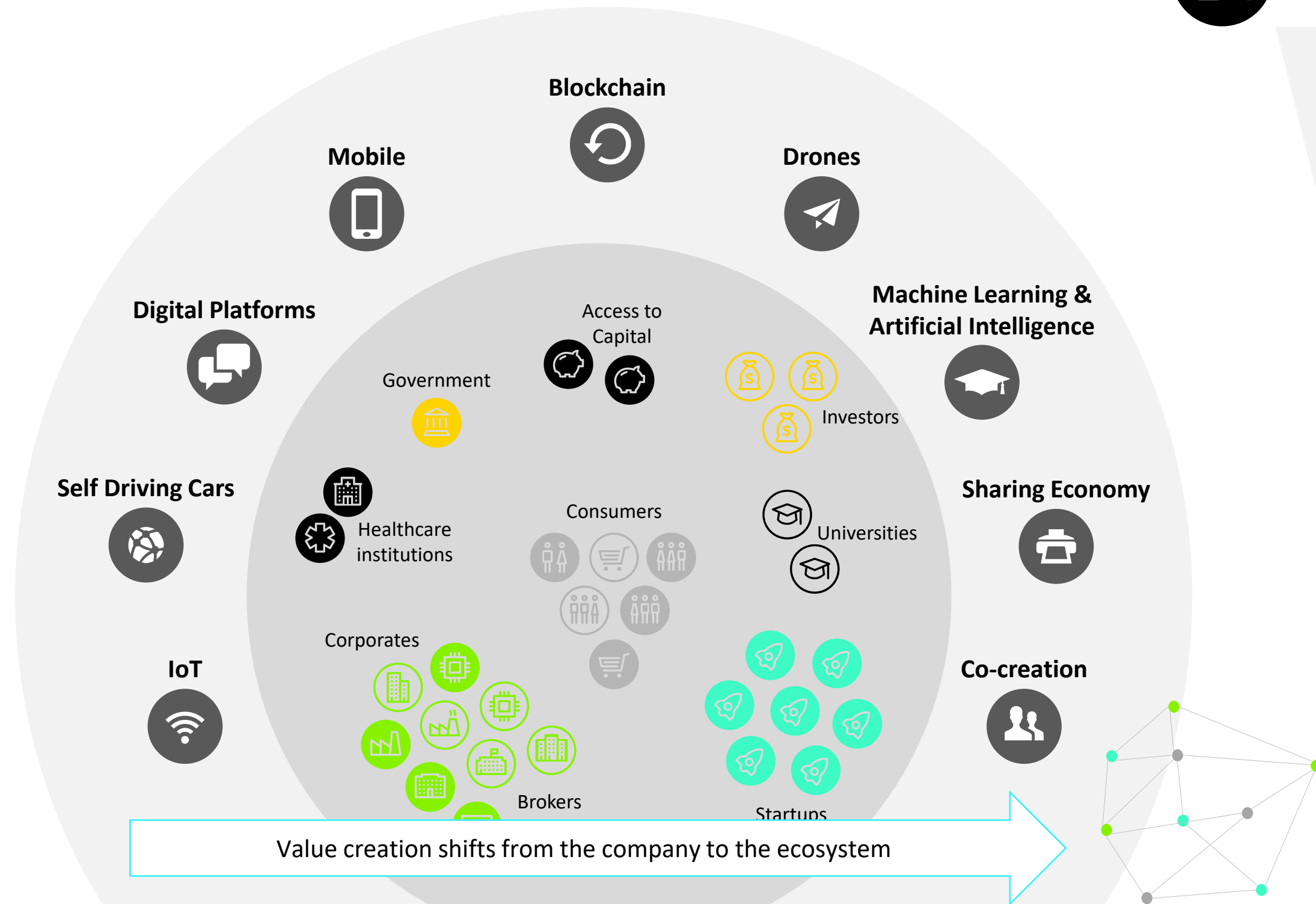
We.



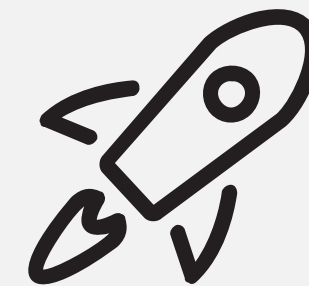
External forces disrupting insurance

New technologies, external influences and innovative business models are shifting the source of value creation outside of incumbent organisations

Changes impacting ecosystems



D. Enablers and Experience



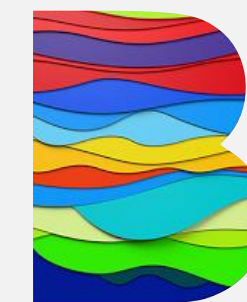
Discover. Design. Disrupt.

Innovation Blueprint



Sense. Scan. Scout.

Ecosystem Accelerator



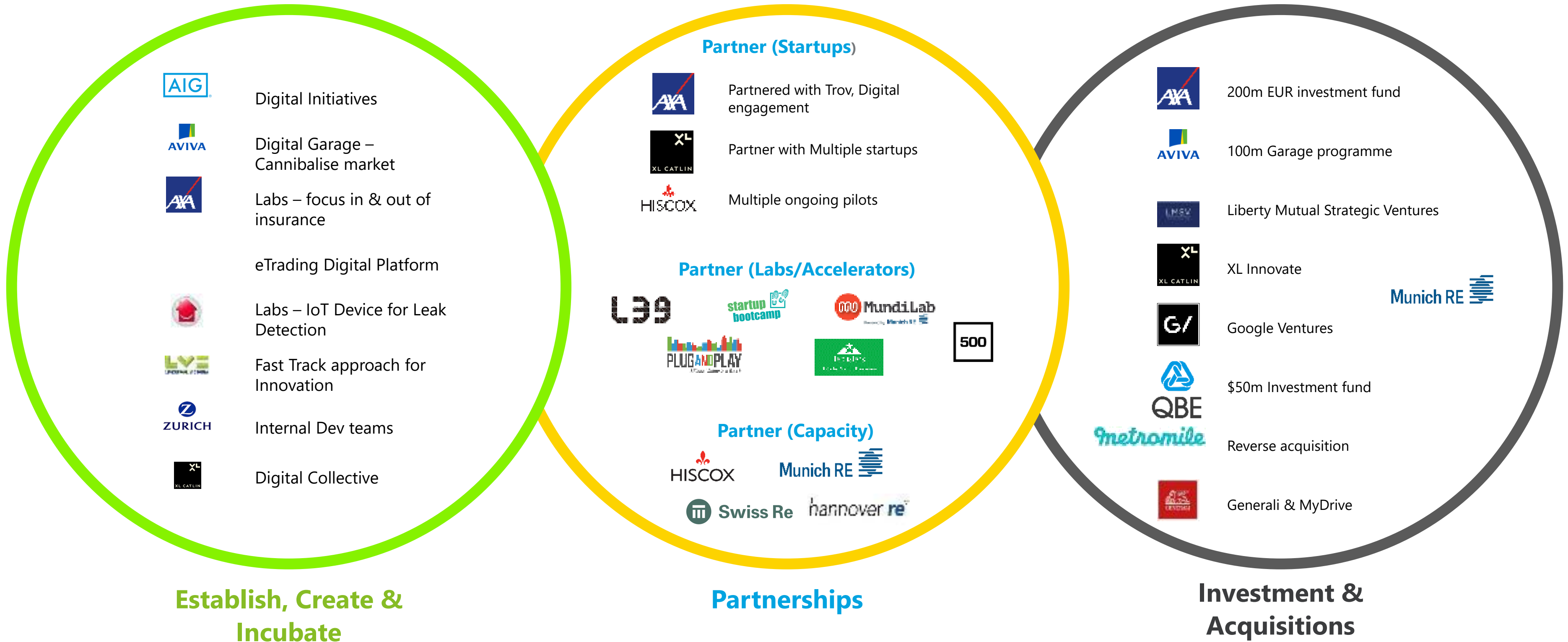
Studio B

Reimagining Financial Services

Disruption is **not** a one-time event, but a continuous pressure to innovate **(re)shaping** client behaviours, business models, and the long-term structure of the insurance industry.

How have Insurers been engaging?

Before we get started with the what and how









“

Delivering performance where physical meets digital

”



Industry Experts



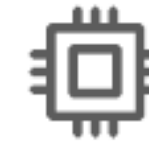
Subject Matter Experts



Performance Specialists



Data Scientists



Sensing/Control Engineers



Simulation Designers



Creative Professionals



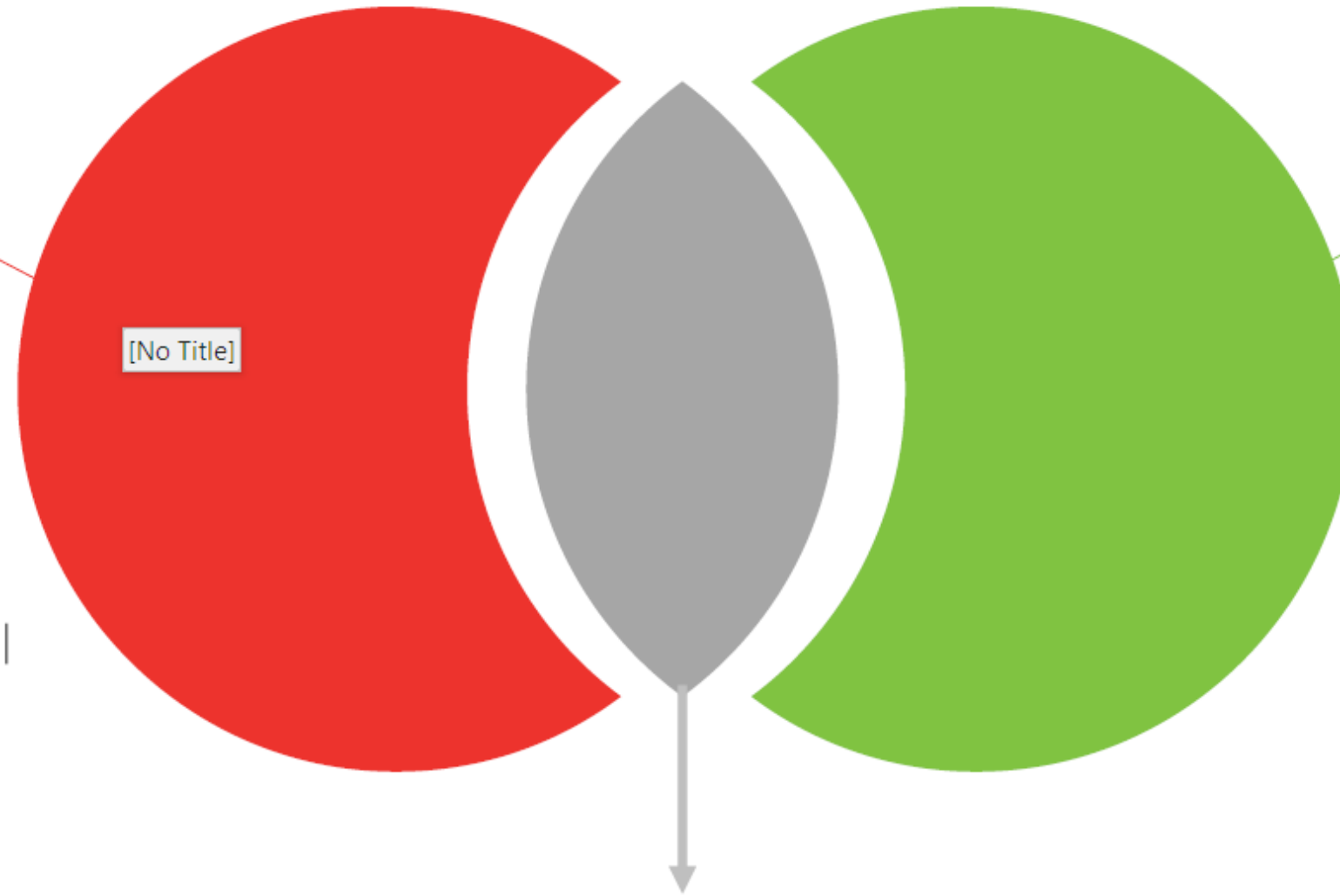
User Experience Designers



Software Developers



- Electronic sensing and control
- Modelling and simulation
- Hardware and software engineering
- Engineering mind-set applied to Operational Excellence



- Deep industry expertise
- Leader in data and analytics
- Scale delivery capabilities
- Broad set of enabling services to implement change and improve performance

We build solutions that bridge the physical and digital worlds to help businesses make better decisions, faster

Twinning the industry understanding and delivery capabilities of a world-leading consultancy, with the experience of applying new technologies from one of the world's leading engineering and technology businesses



EVIDENCE BASED DECISION MAKING

MIKE PHILLIPS – MCLAREN

NIGEL WALSH - DELOITTE







DURA-ACE

McLaren
APPLIED TECHNOLOGIES



F1
Formula 1

Quantification of risk and prediction of performance

1%
30%
5-7 million
6 seconds
24 Hours





Where sport meets technology for the
business of entertainment

HIGHLY REGULATED

CAPPED RESOURCES

PUBLICLY VISIBLE

SAFETY CRITICAL

LIMITED TIME

NOT FAULT TOLERANT





PERFORMANCE

INTERVENTIONS

PEOPLE

SENSORS

TOOLS

DATA

FOCUS ON THE PERFORMANCE IMPROVEMENT NOT A DATA SCIENCE PROJECT

DECISION INSIGHT

MONACO 2008



CASINO DE MONTE-CARLO

73/78



	Lap 3	Lap 4	Lap 5
4 R Kubica	1:37.446	1:36.239	1:37.065
5 F Alonso	+1.216	+0.558	+0.628

DECISION SUPPORT TOOL

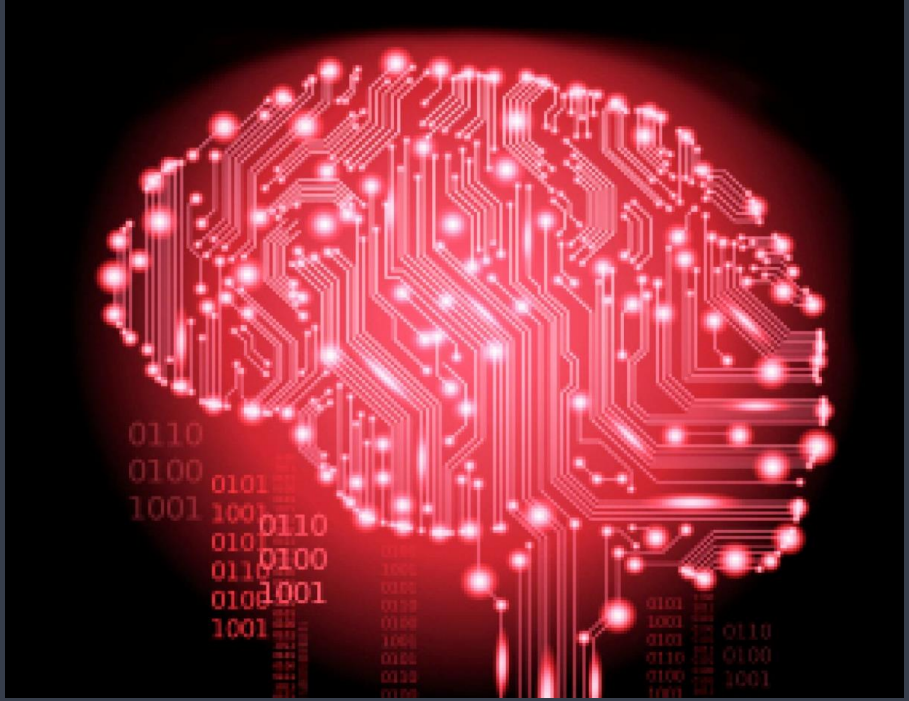
Historic Data



Decision Support Tool

Live Race Data

		GAP	MI	21.063	254	24.425	289	30.250	207	1:12.752	320
14	RBH	McLaren	1.86								
2	GR	Lotus	2.25	25	24.508	251	24.848	282	24.154	259	1:17.510
15	PER	Sauber	5.3	27	21.507	259	24.603	282	30.832	274	1:17.002
4	VET	Red Bull	7.3	2.8	21.063	259	24.425	289	30.250	289	1:15.732
5	ALO	Ferrari	13.4	6.1	22.615	249	26.249	274	31.822	278	1:20.296
6	ROS	Mercedes	13.8	8.4	21.515	251	24.727	287	31.345	289	1:17.587
7	WEB	Red Bull	15.1	1.2	21.582	251	24.718	281	31.046	279	1:17.338
8	DAI	Lotus	15.6	8.5	21.987	254	24.718	282	26.489	282	1:16.168
9	KOB	Sauber	24.4	8.9	22.159	247	25.556	278	31.000	281	1:18.789
10	MAS	Ferrari	25.3	8.8	21.202	259	24.487	284	30.789	289	1:16.469
11	DIR	F India	37.7	12.4	22.825	249	25.281	289	31.222	289	1:18.488
12	HUL	F India	46.2	6.5	22.188	251	25.292	282	31.373	278	1:18.763
13	MAL	Williams	47.1	8.8	22.385	247	25.291	289	31.835	281	1:18.621
16	PEC	STR	84.5	17.4	21.318	248	24.838	277	30.554	279	1:18.888
17	VSB	STR	1.1	29.2	22.109	249	26.001	279	33.947	254	1:21.407
3	BUT	McLaren	1.1	5.2	21.805	249	24.891	278	31.178	273	1:16.706
17	SEN	Williams	1.1	1.4	21.971	249	24.990	279	31.142	274	1:18.072
20	KOV	Caterham	1.1	13.1	24.805	249	25.294	279	31.386	272	1:18.407
21	PET	Caterham	1.1	4.6	23.306	249	25.573	278	31.535	270	1:20.488
20	PH	Marussia	3.1	1.1	23.024	234	26.523	274	33.166	271	1:23.513
24	GO	Marussia	14.1	19.1	22.891	237	26.206	270	STOP		1:22.181
22	DIR	HRT	46.1	19.1	22.954	231	26.689	274	STOP		1:21.621
23	KAR	HRT	48.1	2.1	STOP						1:23.703



Live Weather Data



Domain Expert Analysis (e.g. Tyres, Brakes etc)



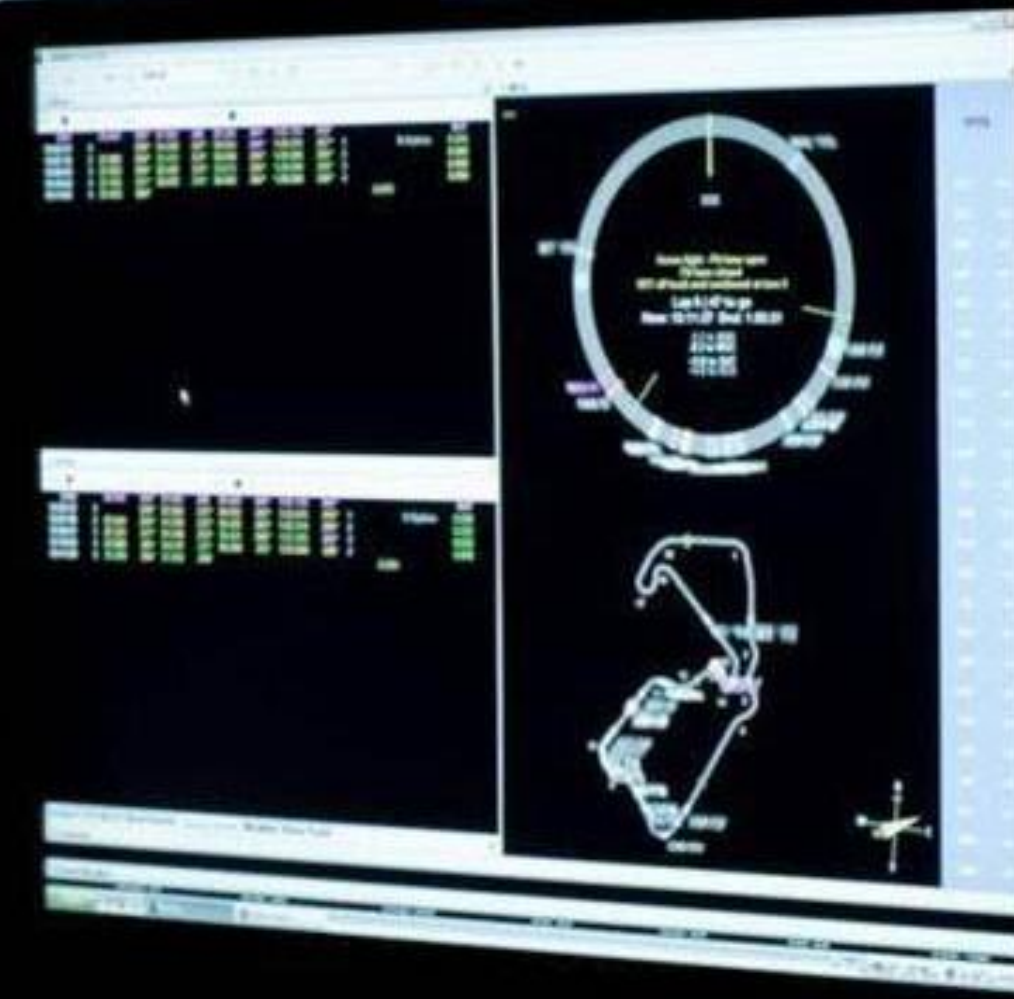
- models
- simulations
- Visualisation
- recommendations

Strategist

Race Engineer

Driver



A monitor displaying a table of race data. The table has multiple columns and rows, with some cells highlighted in green. The data appears to be related to race performance metrics.

START CAR 101
START CAR 102
START CAR 103
START CAR 104
START CAR 105

START CAR 101
START CAR 102
START CAR 103
START CAR 104
START CAR 105



0:00

F1



Where we work

High Stakes
decisions

Difficult
trade-offs

Human in
the loop

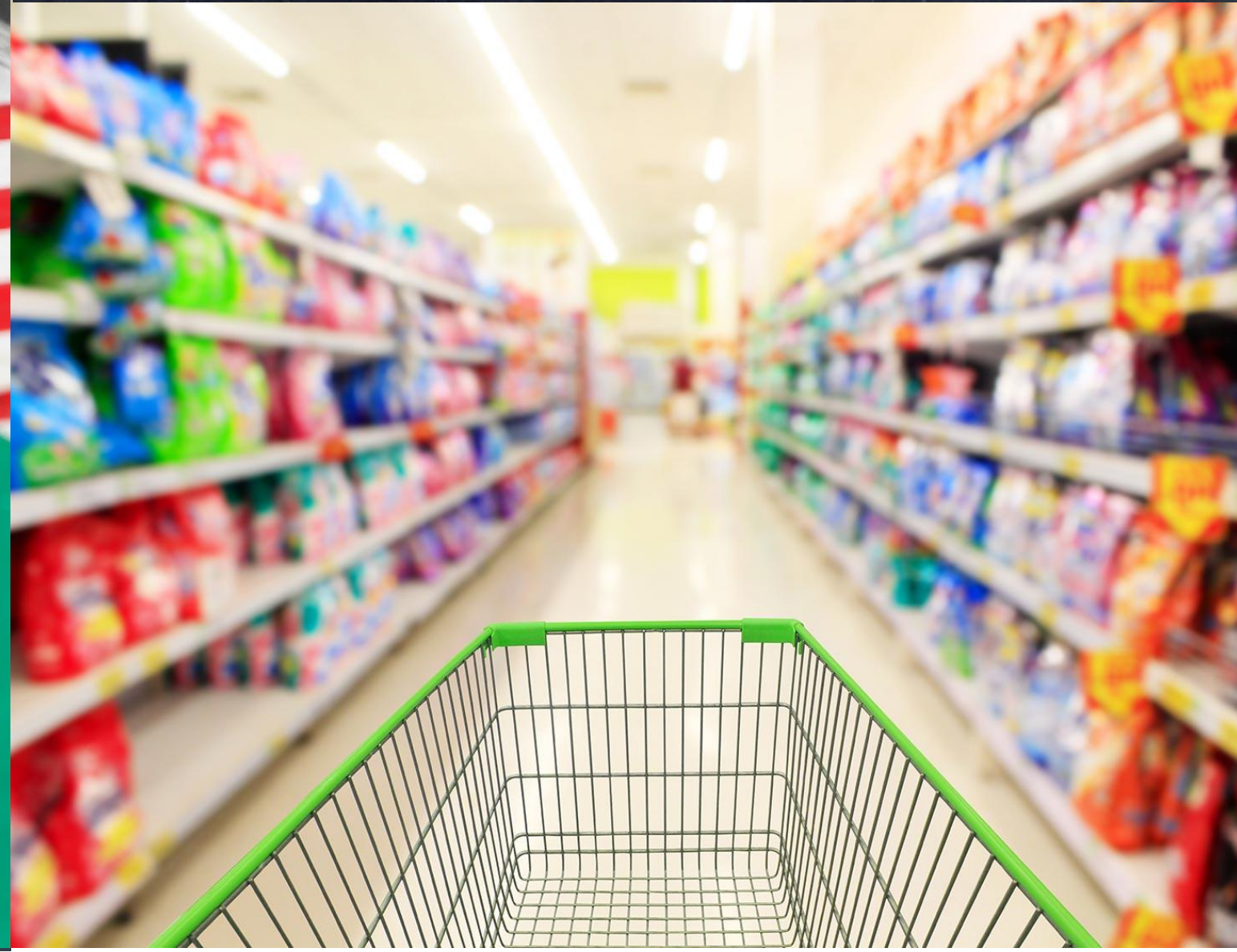
Many different
variables
at play

Time
critical

Deloitte.

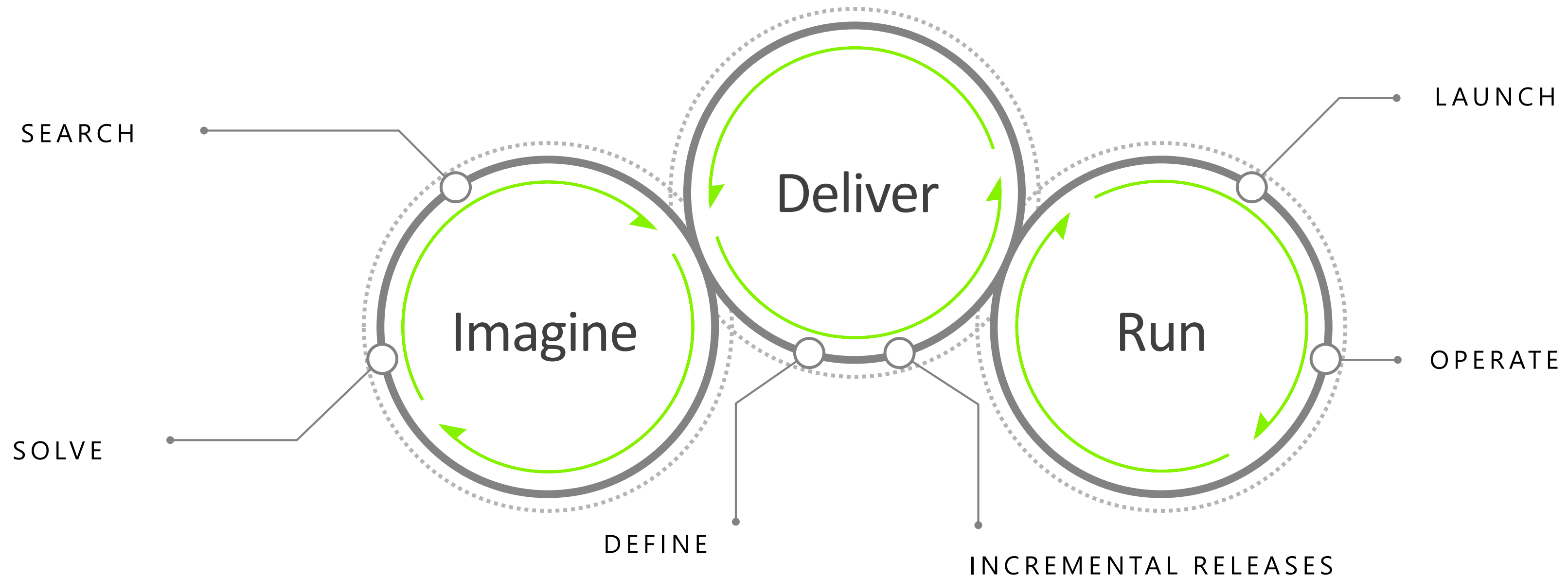
McLaren
APPLIED TECHNOLOGIES





We help to Imagine, Deliver, Run the future

Put simply.



Thank you.



Mike Phillips

Partner, Deloitte

jimallen@deloitte.co.uk



Nigel Walsh

Partner, Deloitte Digital

ndwalsh@deloitte.co.uk

This publication has been written in general terms and we recommend that you obtain professional advice before acting or refraining from action on any of the contents of this publication. Deloitte MCS Limited accepts no liability for any loss occasioned to any person acting or refraining from action as a result of any material in this publication.

Deloitte MCS Limited is registered in England and Wales with registered number 03311052 and its registered office at Hill House, 1 Little New Street, London, EC4A 3TR, United Kingdom.

Deloitte MCS Limited is a subsidiary of Deloitte LLP, which is the United Kingdom affiliate of Deloitte NWE LLP, a member firm of Deloitte Touche Tohmatsu Limited, a UK private company limited by guarantee (“DTTL”). DTTL and each of its member firms are legally separate and independent entities. DTTL and Deloitte NWE LLP do not provide services to clients. Please see www.deloitte.com/about to learn more about our global network of member firms.

© 2018 Deloitte MCS Limited. All rights reserved.